



## AVK SURFACE BOX NORMPOT AFSLUITER HD-GG

80/43  
000

Fixed height  
Surface box for distribution valves  
Standard lid inscription: W water logo

- Normpot Afsluiter HD-GG
  - Round cast iron lid
  - Square top surface box

### Features

- Lightweight, user-friendly, silent and maintenance free
- 100% recyclable and significantly less use of resources compared to traditional materials
- Manufactured out of high grade recycled materials
- Selected materials for housing and lid ensure easy opening at all times
- Heat resistant to max. 250 °C
- Suitable for low-temperature applications
- C250 load bearing capacity

### Optional

- Various colours and lid inscriptions possible

### Standards

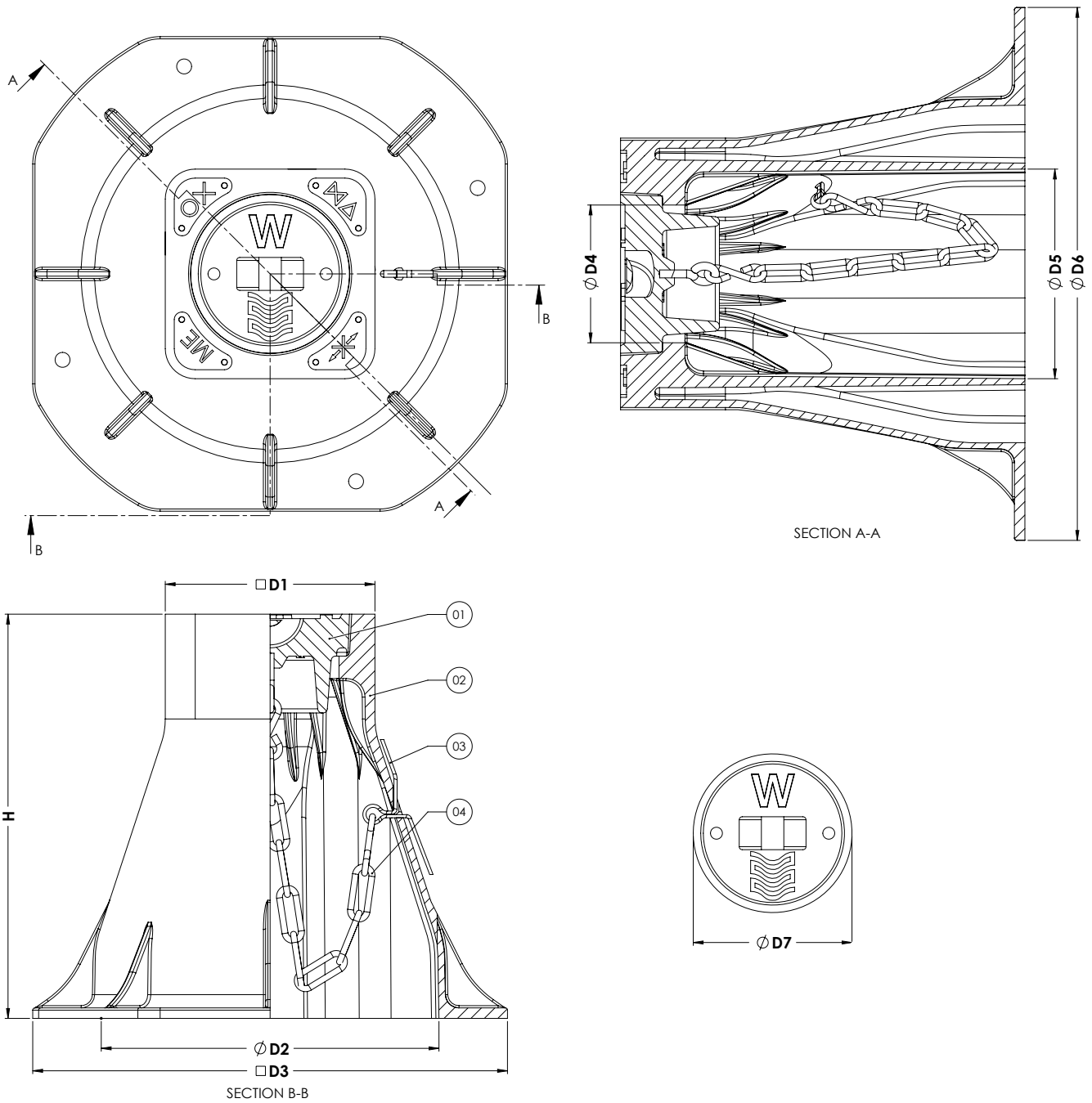
- T.V./072/3-E

### Accessories

- Support tile IV
- Top frame service connection



Expect... **AVR**



**Component list**

|              |                  |
|--------------|------------------|
| 1. Lid       | EN-GJL-200       |
| 2. Housing   | PA+              |
| 3. Split pin | Brass            |
| 4. Chain     | Galvanized steel |

**Reference nos. and nominal dimensions**

| AVK ref. nos. | D1<br>mm            | D2<br>mm            | D3<br>mm              | D4<br>mm | D5<br>mm | D6<br>mm | D7<br>mm | H<br>mm |
|---------------|---------------------|---------------------|-----------------------|----------|----------|----------|----------|---------|
| 80-43-0000002 | 140                 | 225                 | 310                   | 92       | 140      | 350      | 106      | 270     |
|               | Weight box<br>in kg | Weight lid<br>in kg | Total weight<br>in kg |          |          |          |          |         |
|               | 2.3                 | 2.1                 | 4.4                   |          |          |          |          |         |

For other variants different item numbers apply  
 Dimensions are subject to tolerances