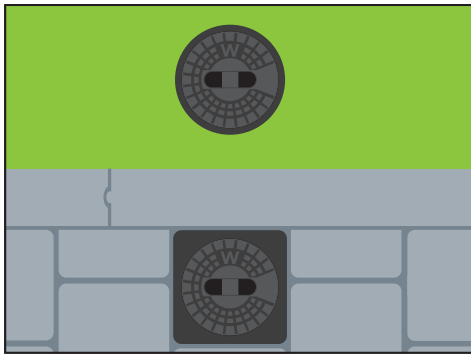
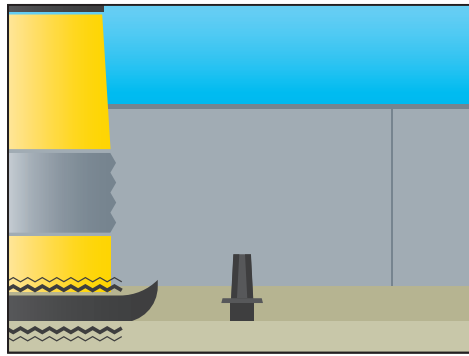


Installation manual

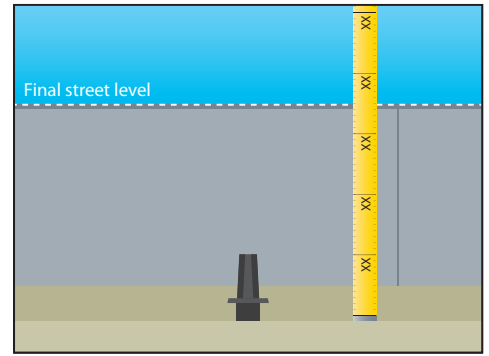
Fixed height surface boxes in pavement or green zones



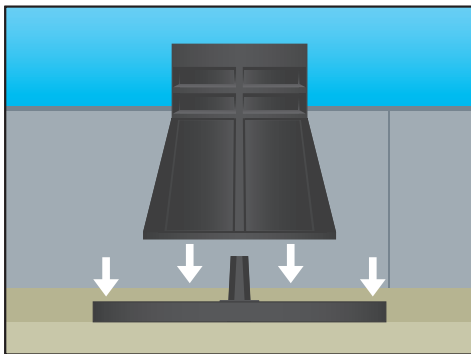
Final situation



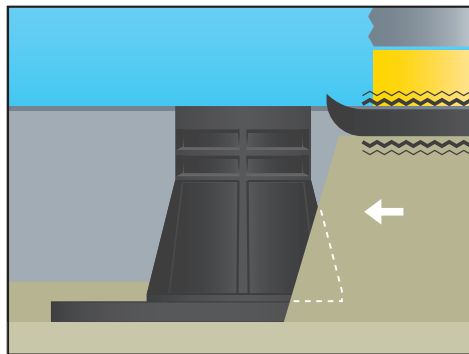
1. Compact the subsoil.



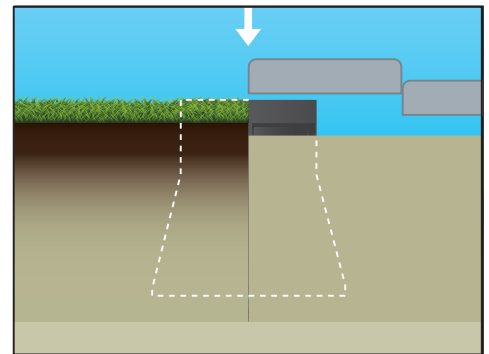
2. Determine the final height of the surface box.



3. Place the support tile on the subsoil around the spindle (optional) and centre the surface box above the spindle.



4. Surround the surface box with supporting soil/gravel and sufficiently compact before laying the pavement/grass.



5. Lay the pavement/grass. Result: perfect installation due to proper compacting and use of AVK surface box with support tile.